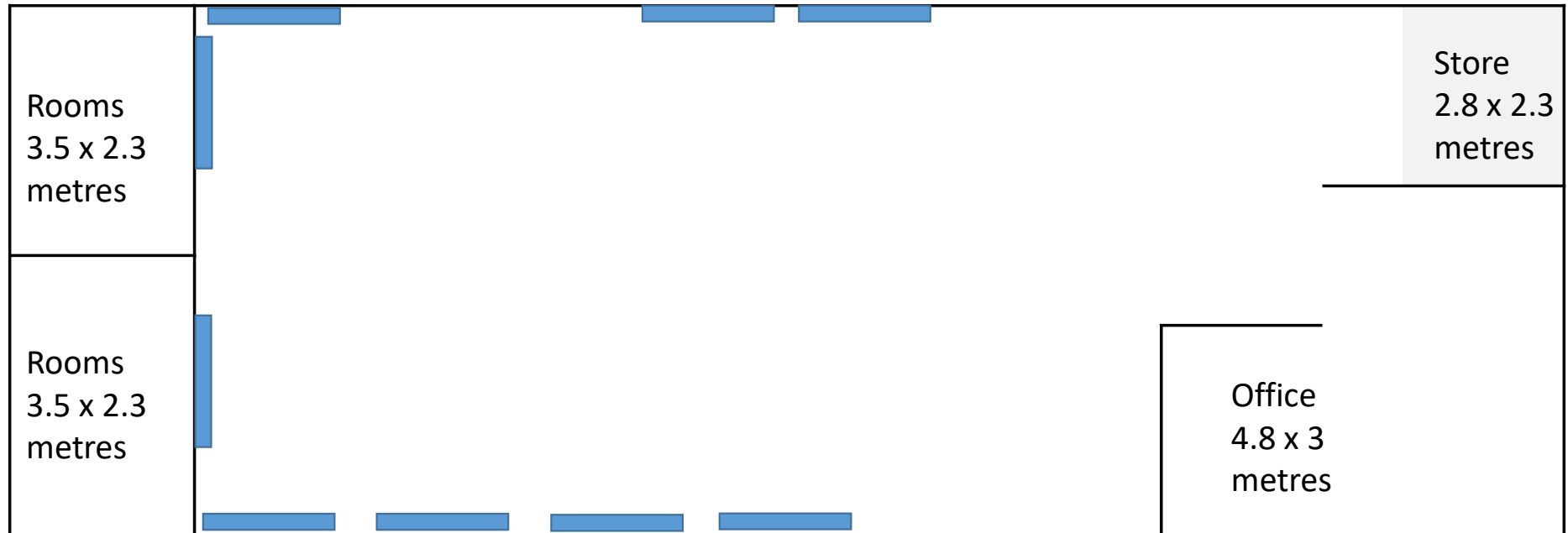




# ROOM LAYOUT LIBRARY

7.4 metres wide



Key:

Moveable Library Shelving Tables

Desks

Other Furnishings

Bookshelf

Ottoman

Other

12 metres long between office and rooms

2 bays

18 bays of shelving in groups of 2 that are 0.9 m wide with 3 shelves = 48.6LMs total and 5.4 LM on each 2 bays – see photos

# LIBRARY PHOTOS



There is shelving around the perimeter of the room attached to the wall – 18 sets of 3 shelves

There is shelving in the storeroom

Meeting rooms didn't have any tables only chairs and a pedestal-

