

In Block B Level 3, are located 2 Art classrooms with a common wet area and store room.

Each classroom has the following:

- 8 x Art Tables
- 4 x Student chairs
- 1 x Teachers Desk
- 1 x Teachers Chair
- 18 x Stools
- 1 x drying rack
- 1 x drafting table
- 2 x Pinboard Cabinets
- 2 x Whiteboard Cabinets

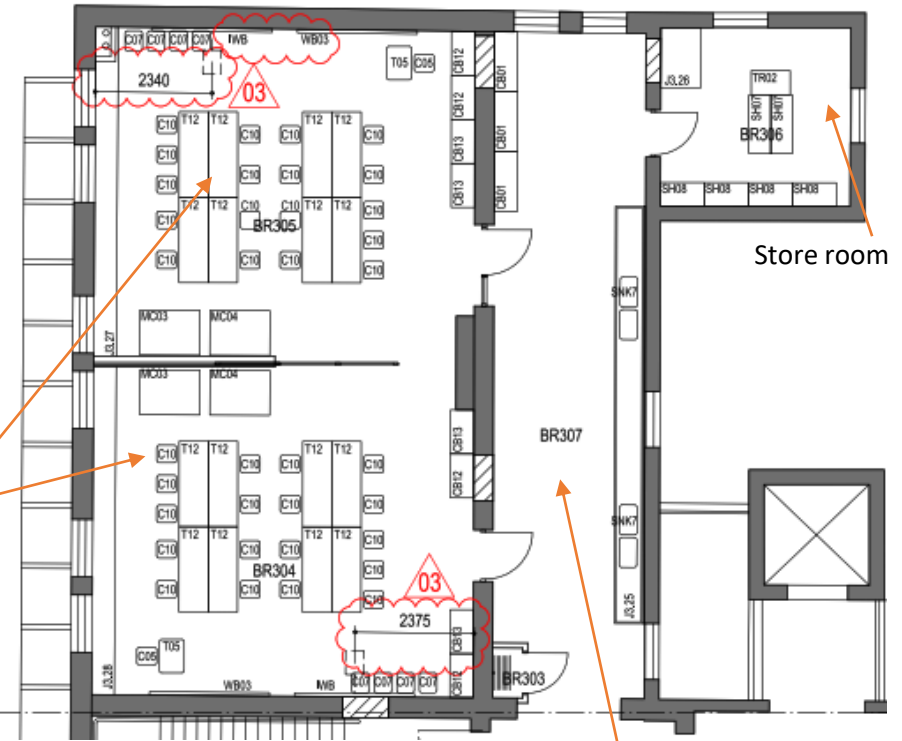


2X 4.4Lm



2X 4.4LM

Art classrooms



Store room

Wet area

Total Storage per Classroom = approx. **18LM** (that is approx. 22 crates)

The combined wet area, features fixed joinery in the sink area of approx. 8LM & 3 x High Tambou cabinets.

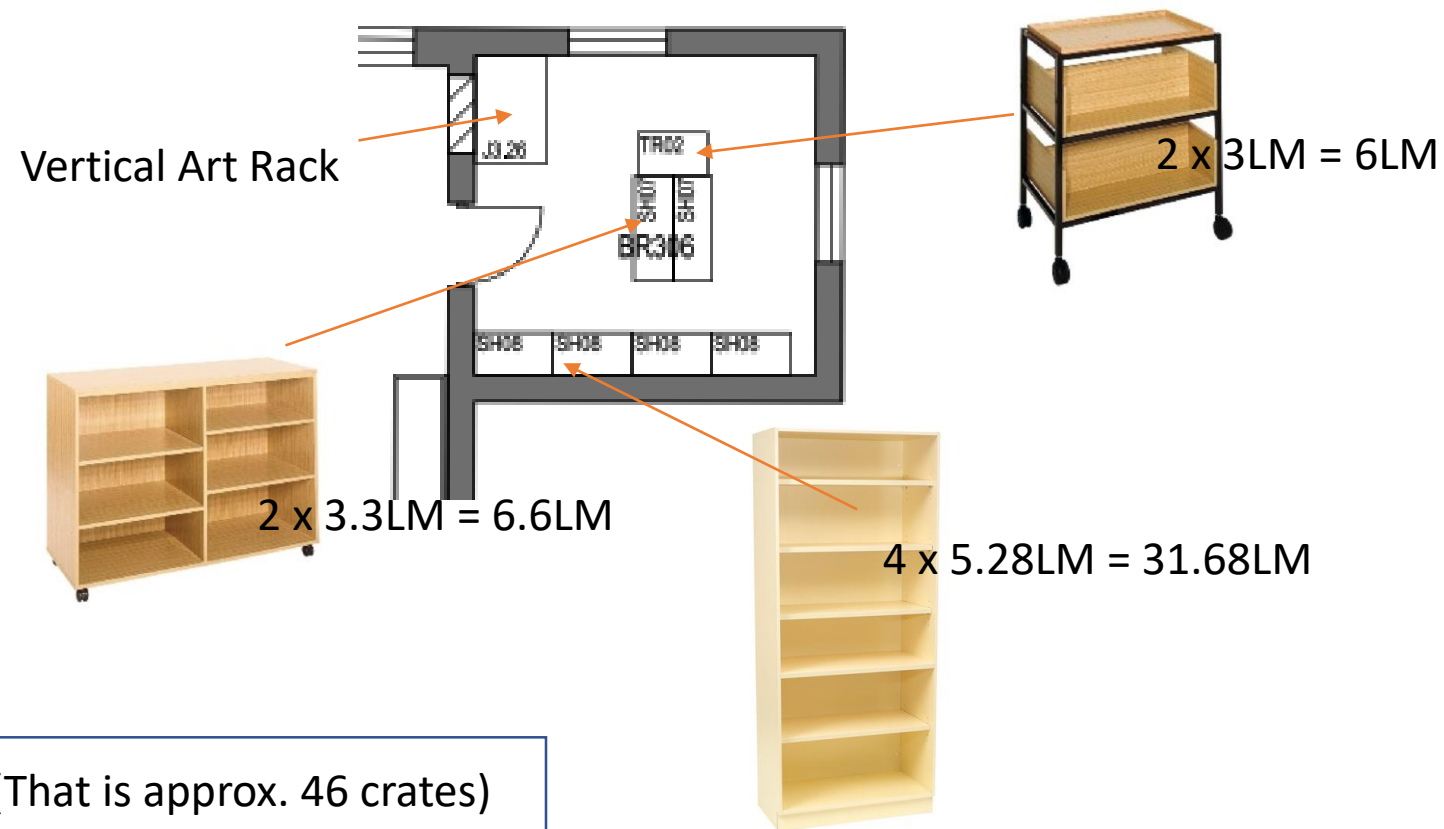


3 x 4.5LM

Total Storage for the Wet Area = **21.5LM** (that is approx. 24 crates)

The Art Store (adjacent to the wet room) features the following storage;

- 4 x bays of open shelving
- 2 x Mobile Shelving with open shelves
- 2 x Art Trolley
- 1 x Vertical Art Racking



Total storage for Art Room Store = approx. **41.2LM** (That is approx. 46 crates)

Furniture Schedule for each Art Classroom:



Drafting Table



Large Drying Rack
36 huge drying trays (18 each side)
Trays measure 68cm x 48cm (Approximately A2 paper size).
Overall assembled dimensions 116cm (H) x 70cm (W) x 98cm (D)



8 x Student Desks
1710W x 585D x 890H



18 x Sebel Focus Stools
490W x 550D x 720H



Teachers Chair



Teachers Sit-Stand Desk



4 x PantoFlex
Student Chairs